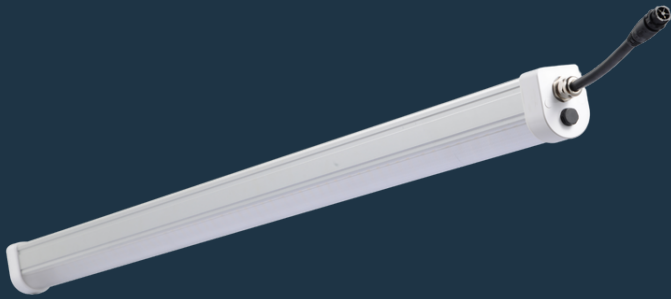


THE AELIUS 60W LED TUBE



DIMENSIONS & WEIGHT

Single Bar

Length: 48" (1200 mm)

Height: 2.6" (65mm) 3.15 LBS

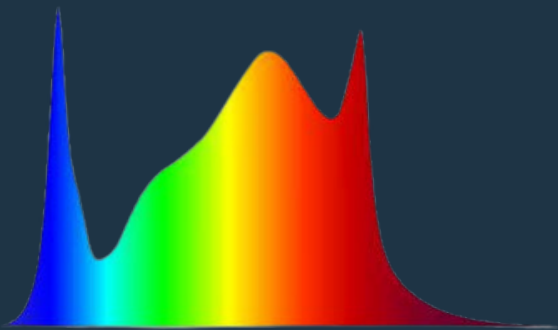
Width: 2.0" (50mm)

BUILD

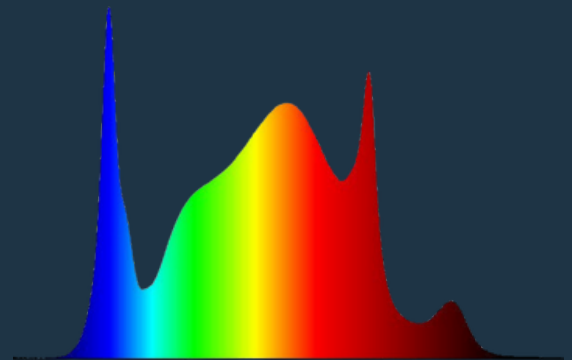
The Aelius 60W LED Tube has a slim, practical profile that is designed for growing leafy greens in vertical farming applications. With a built-in driver and one connector for power and dimming, installation is a breeze. You can daisy chain the 60w tubes together quickly and easily to suit your unique growing needs. Each box contains four fixtures, with power cables and mounting hardware.

SPECTRUMS AVAILABLE

Standard Spectrum



Far Red Spectrum



The Aelius 60W LED Tube is available in two different full-spectrum light recipes.

The Standard Spectrum is a balanced distribution of light that is proven to excel with most crops. The Far Red Spectrum has the benefits of the standard spectrum with a spike in far red, leading to increased biomass production and fuller leaves. Try out both spectrums or mix them up to find out what works best in *your* unique environment with *your* crop.

THE AELIUS 60W LED TUBE

FIXTURE OVERVIEW

MODEL	The Aelius 60W LED Tube Light
PHOTON FLUX	156 $\mu\text{mol/S}$
EFFICACY	2.60 $\mu\text{mol/J}$
LIFETIME	L90 > 43,000hrs
LED OPTICS	120 Primary Optics
DIMMABLE	0-10V with RJ12 port



SPECIFICATIONS

FIXTURE POWER	60 W
INPUT VOLTAGE RANGE	100-277V & 347V
TEMPERATURE RANGE	-20 to 35 °C
POWER FACTOR	0.90
FREQUENCY	50/60Hz
THD	<20%

OTHER

CERTIFICATIONS	CE / cETLus / DLC pending
INDIVIDUAL COVERAGE	12" x 48"
TOTAL BOX COVERAGE	48" x 48" (12" spacing)
WARRANTY PERIOD	5 Years
WET LOCATIONS	IP65
DAISY-CHAIN	8 Fixtures 120V 16 Fixtures 240V

PEACE OF MIND

Aelius LED products are fully certified, safe, and easy to use! We offer a 5-year warranty, unmatched customer service, and our #AELIUSFAM at your fingertips!

FAM
SUPPORT



Let's Talk

AELIUSLED.COM
SALES@AELIUSLED.COM
PHONE: 1.705.674.5242
TOLL FREE: 1.844.472.3389

Join The Fam

WWW.AELIUSLED.COM



@AELIUSLED

