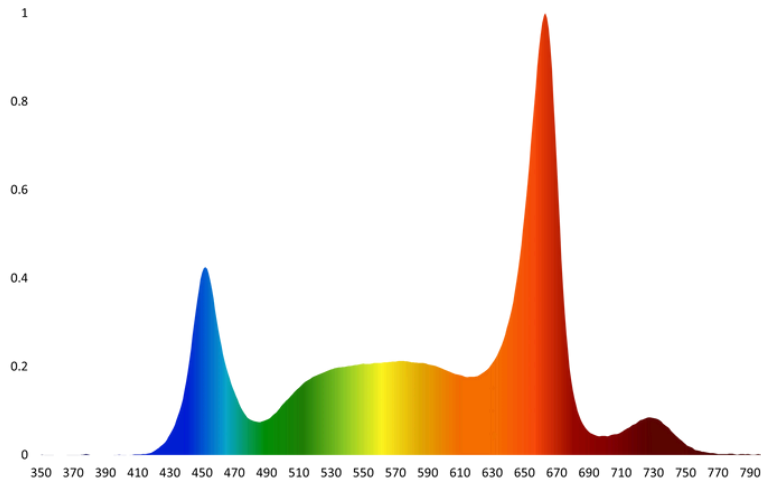
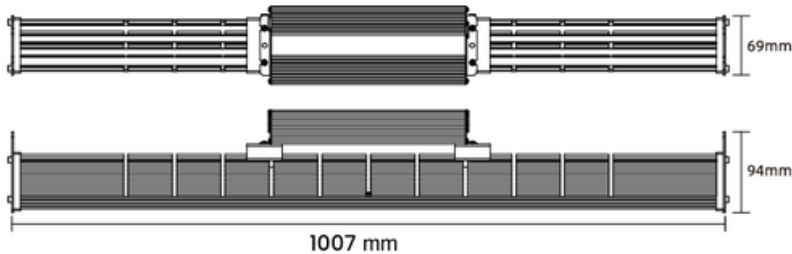


THE AELIUS 320G

The Aelius 320G is built with durable tempered glass, designed to withstand variable greenhouse conditions. It's ideal for greenhouses with long day lengths and limited hanging height, delivering reliable performance in challenging environments.

FIXTURE DIMENSIONS

39.7" x 2.72" x 3.70"



THE REDD SPECTRUM

The REDD Spectrum is specially designed for flowering and greenhouse cultivation. With the right balance of blue and red rich light, you can expect to truly experience the genetic potential of your crop.



FIXTURE HIGHLIGHTS

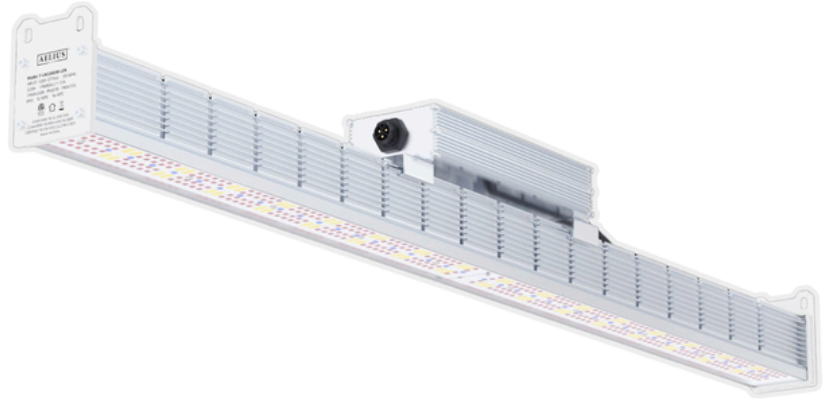
MODEL	F-LN320RED-LSN
EFFICACY (400-800nm)	2.8 $\mu\text{mol}/\text{J}$
PHOTON FLUX (400-800nm)	896 $\mu\text{mol}/\text{s}$
POWER	320 W
VOLTAGE RANGE	120-480 V



THE AELIUS 320G

FIXTURE SPECIFICATIONS

FULL MODEL NAME	The Aelius 320G
HIGH VOLTAGE RANGE	200 - 480V
LOW VOLTAGE RANGE	120 - 277V
LIFETIME	L90 > 50,000hrs
LED OPTICS	120° Glass Lens
DIMMABLE	0-10V
FIXTURE POWER	320 W
POWER FACTOR	0.97
FREQUENCY	50/60Hz
THD @ 100% POWER	≤15%
WARRANTY PERIOD	5 Years
DAMP LOCATIONS	IP65
DRIVER (Fixture Mounted)	uPowerTek



AELIUSTM
LED

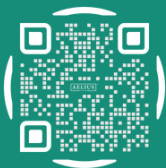
LET'S CONNECT



1-844-472-3389



sales@aeliusled.com

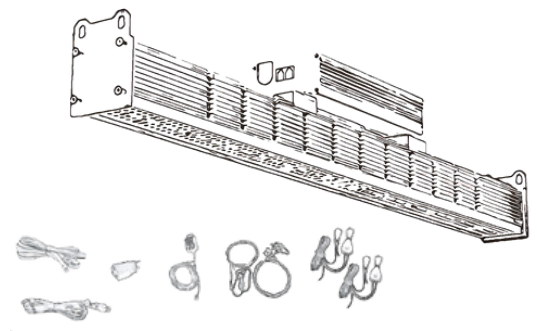


aeliusled.com

@aeliusled

INCLUDED IN BOX

LED Fixture
LED Driver
Power Cord
Daisy-Chain Data Cord
120V Adapter
Dimmer (If Applicable)
Hangers



WHAT'S ABOVE YOUR PLANTS?