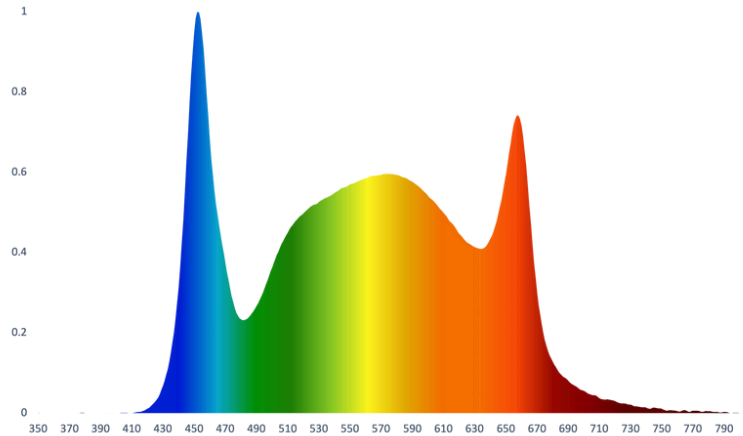
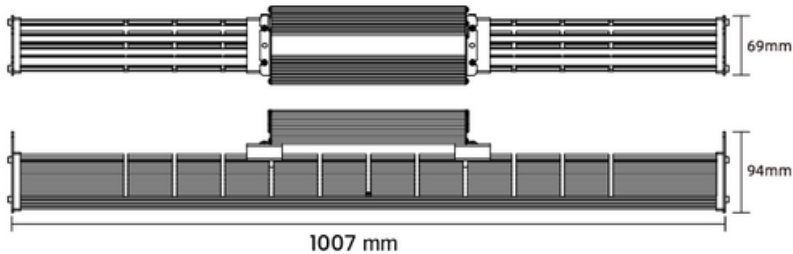


# THE AELIUS 320G

The Aelius 320G is built with durable tempered glass, designed to withstand variable greenhouse conditions. It's ideal for greenhouses with long day lengths and limited hanging height, delivering reliable performance in challenging environments.

## FIXTURE DIMENSIONS

39.7" x 2.72" x 3.70"



## THE XB SPECTRUM

The XB Spectrum is specifically designed for crops that require more blue than red light, encouraging compact growth and enhanced plant structure.



## FIXTURE HIGHLIGHTS

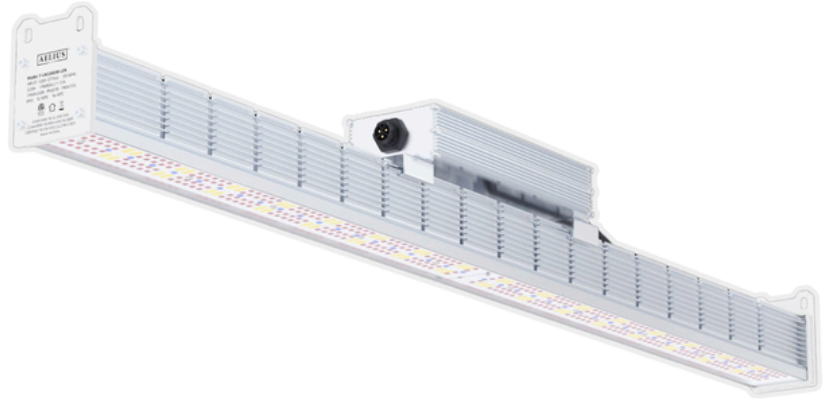
<b>MODEL</b>	F-LN320GX B-LSN
<b>EFFICACY</b> (400-800nm)	2.8 $\mu\text{mol}/\text{J}$
<b>PHOTON FLUX</b> (400-800nm)	896 $\mu\text{mol}/\text{s}$
<b>POWER</b>	320 W
<b>VOLTAGE RANGE</b>	120-480 V



# THE AELIUS 320G

## FIXTURE SPECIFICATIONS

<b>FULL MODEL NAME</b>	The Aelius 320G
<b>HIGH VOLTAGE RANGE</b>	200 - 480V
<b>LOW VOLTAGE RANGE</b>	120 - 277V
<b>LIFETIME</b>	L90 > 50,000hrs
<b>LED OPTICS</b>	120° Glass Lens
<b>DIMMABLE</b>	0-10V
<b>FIXTURE POWER</b>	320 W
<b>POWER FACTOR</b>	0.97
<b>FREQUENCY</b>	50/60Hz
<b>THD @ 100% POWER</b>	≤15%
<b>WARRANTY PERIOD</b>	5 Years
<b>DAMP LOCATIONS</b>	IP65
<b>DRIVER</b> (Fixture Mounted)	uPowerTek



**AELIUS**<sup>TM</sup>  
LED

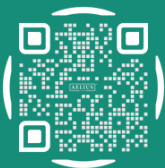
## LET'S CONNECT



1-844-472-3389



sales@aeliusled.com

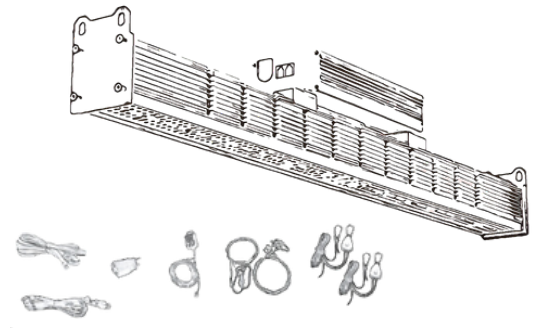


aeliusled.com

@aeliusled

## INCLUDED IN BOX

LED Fixture  
LED Driver  
Power Cord  
Daisy-Chain Data Cord  
120V Adapter  
Dimmer (If Applicable)  
Hangers



# WHAT'S ABOVE YOUR PLANTS?